



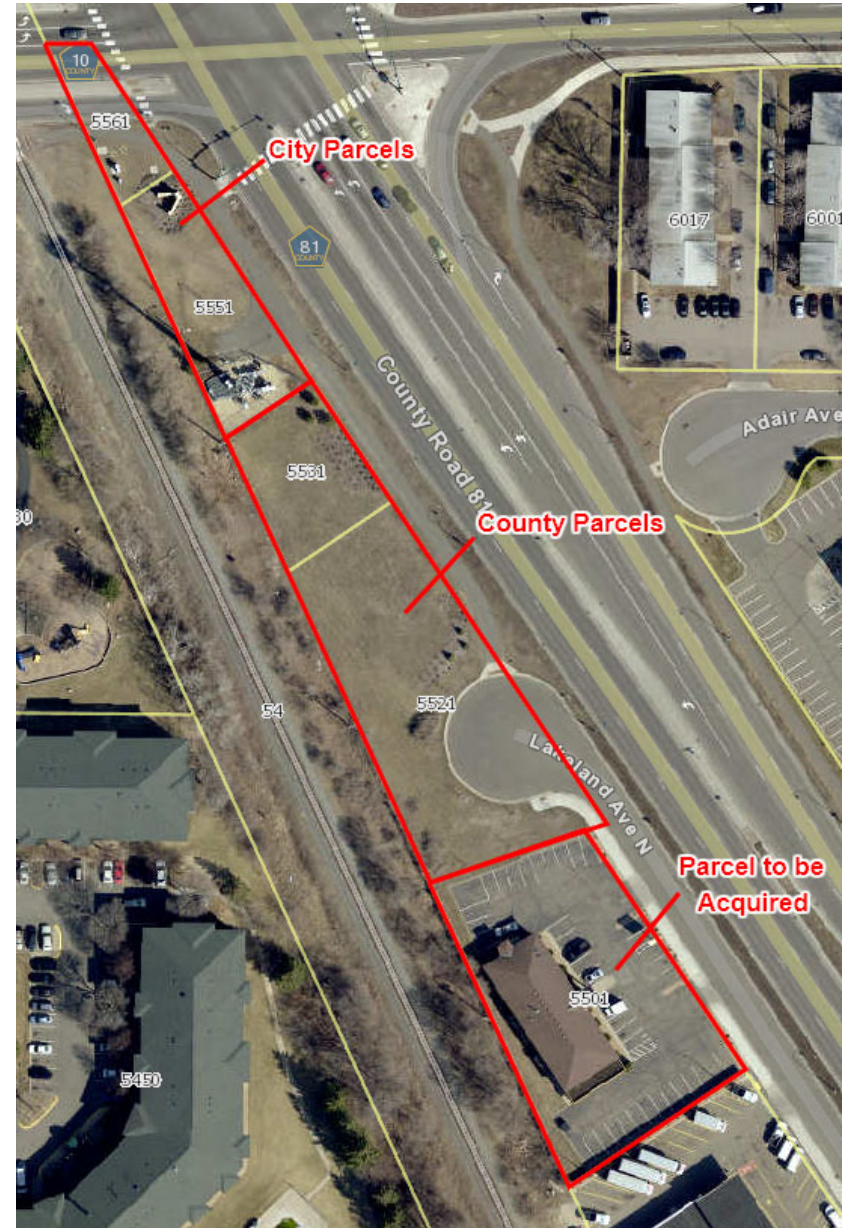
# **Blue Line Extension Update for City Council**

**October 12, 2017**



## Bass Lake Road Station – Current Parcels

- **City property at north end**
  - Existing cell tower and city welcome sign will remain
  - Metro Transit will need an easement for equipment
  - Metro Transit will install and maintain bike racks and trash containers in north access area
  - Metro Transit responsible for sidewalk/trail snow removal through rail crossing
- **County and to-be-acquired private property will comprise park & ride**







# Bass Lake Road Station – Previous Layout





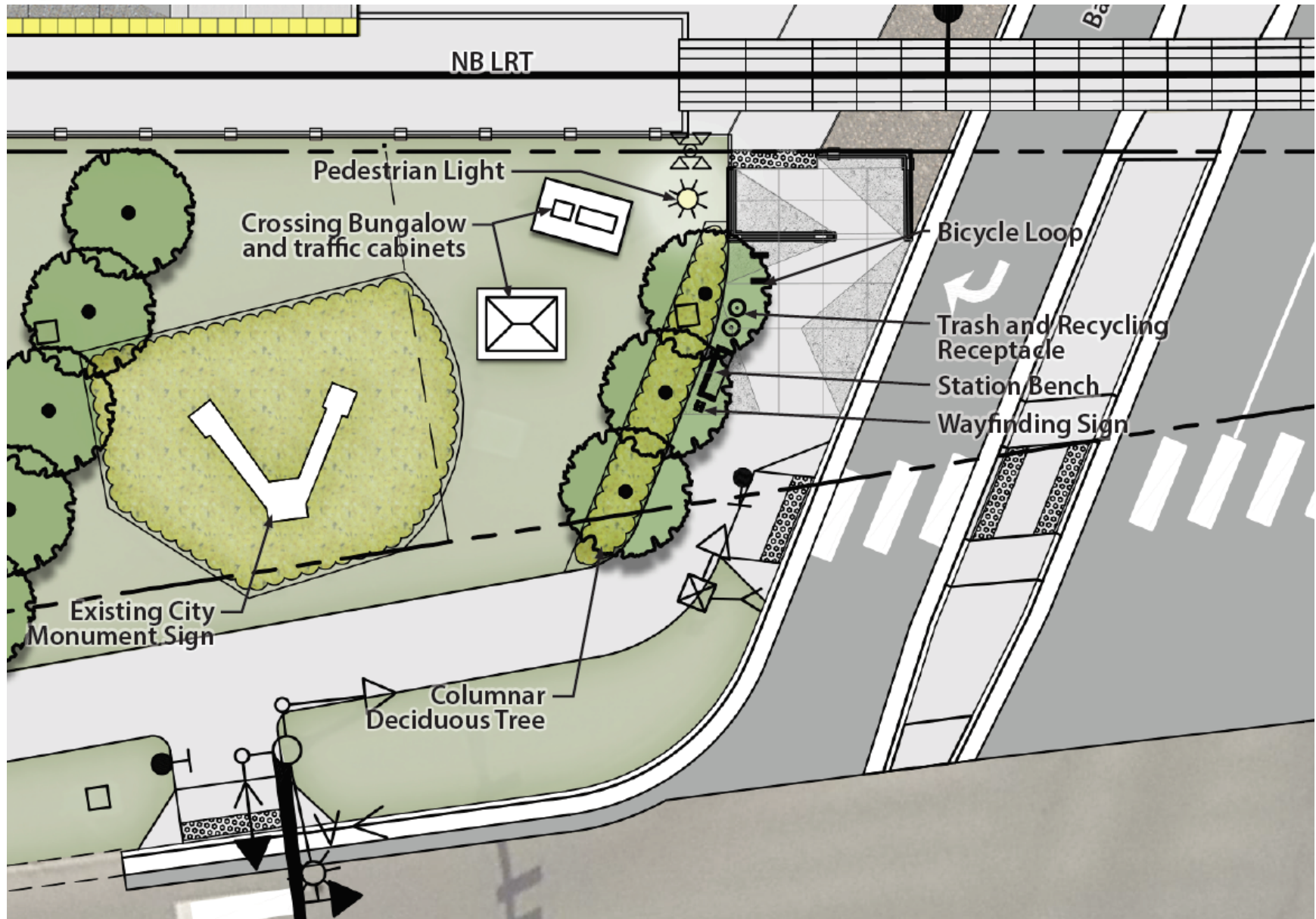


# Bass Lake Road Station – Updated Layout





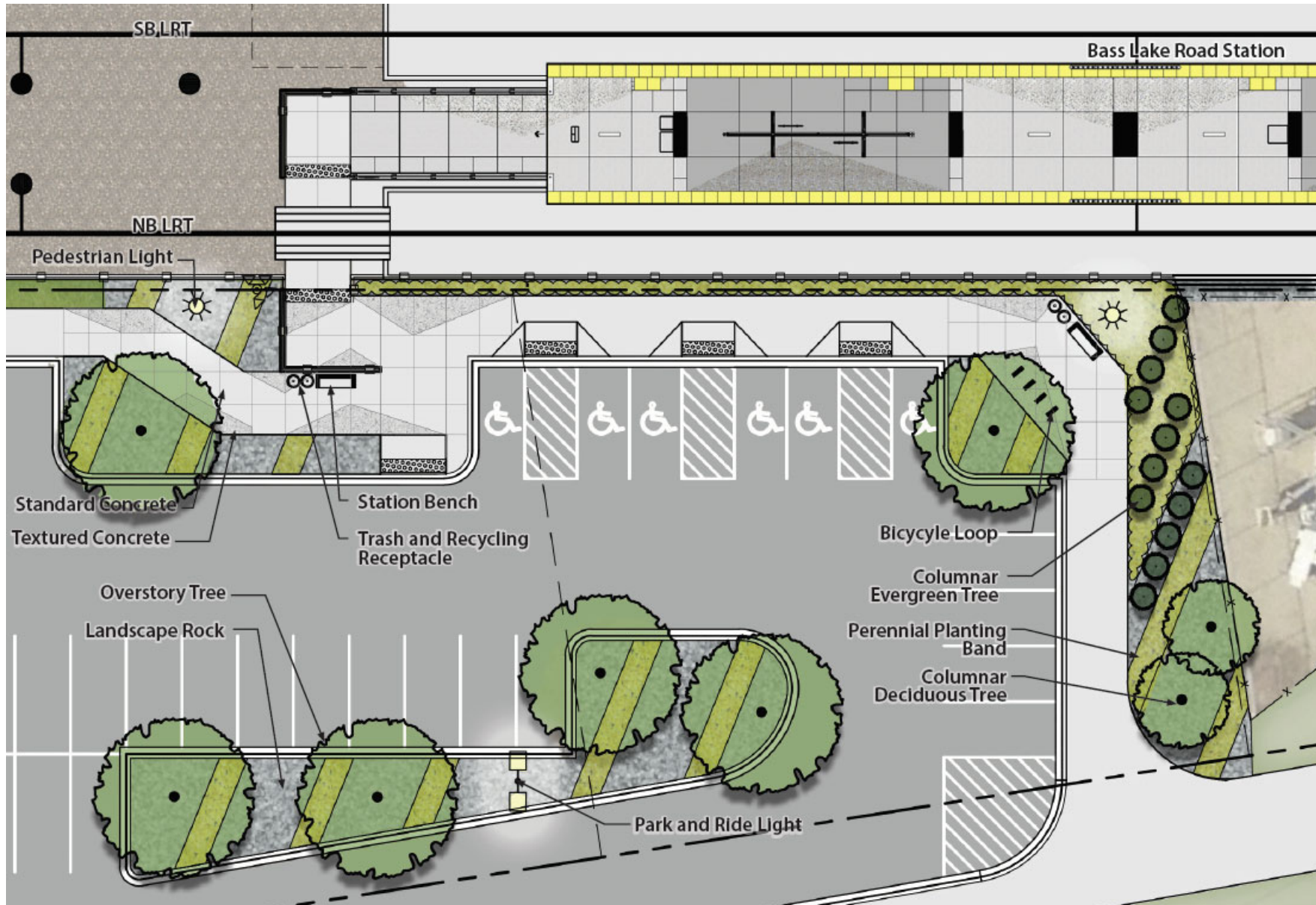
# North Station Access Area





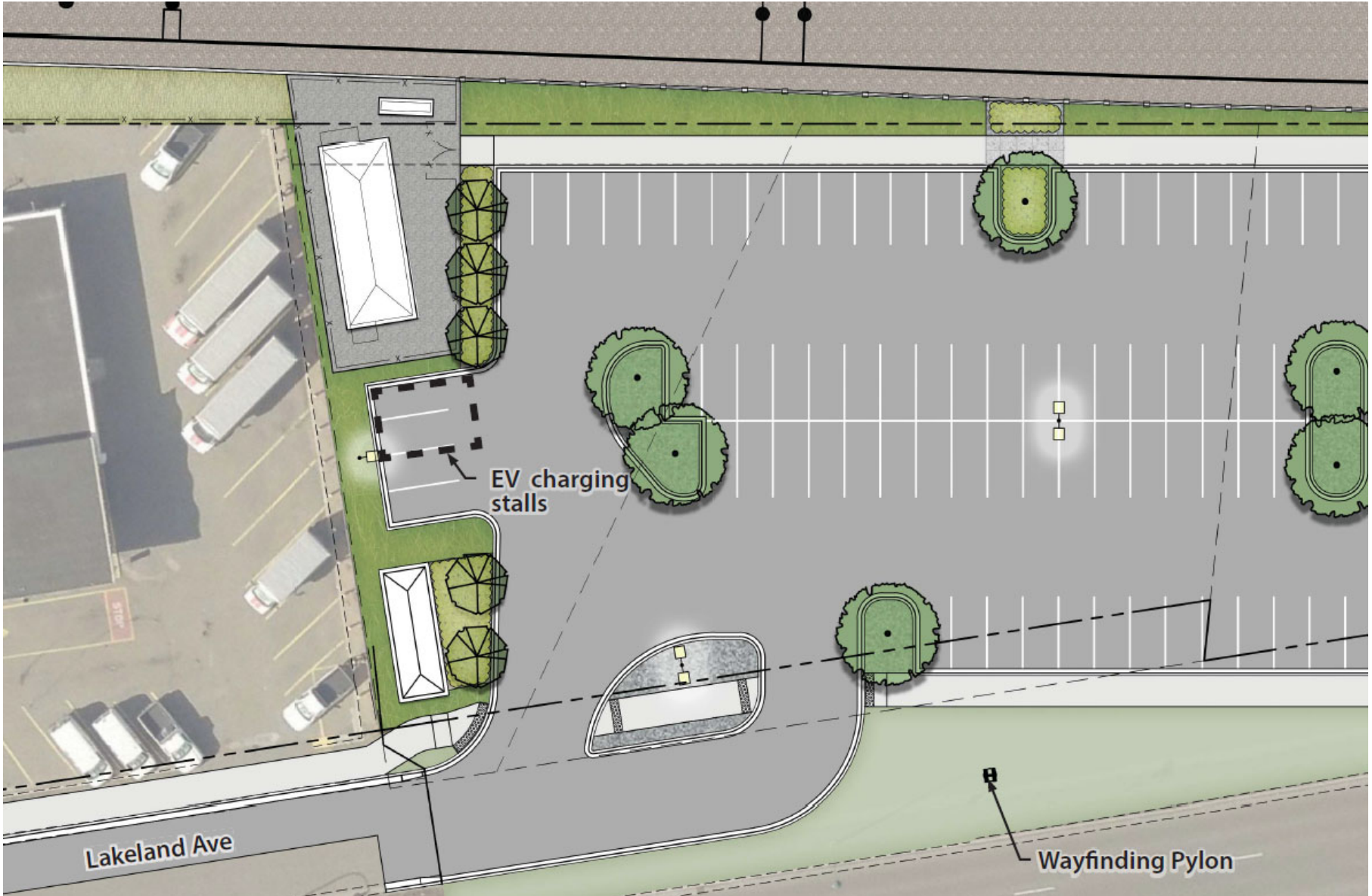


# Park & Ride – North End Details





# Park & Ride - South End, TPSS & Signal Bungalow







# Bass Lake Road Station – Site Design Elements

## PAVEMENT



Concrete with textured patterns

## LANDSCAPE



Forms and Textures

## FURNISHINGS



Benches

Combined option



Trash/Recycling Receptacles

Side by side option



"Hoop" option



Bicycle Loops

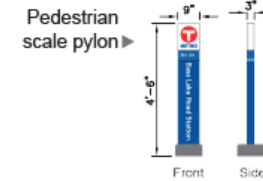
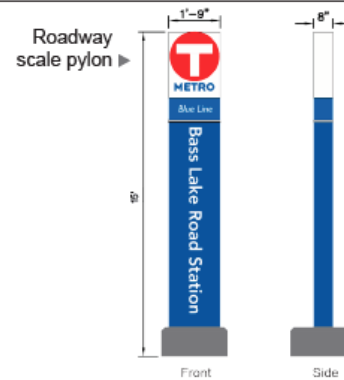
"Hitch" option



Pedestrian / Park and Ride Lighting  
(15' and 30' height)



## WAYFINDING SIGNAGE



DRAFT-WORK IN PROCESS



BLUE LINE LRT EXTENSION  
CITY OF CRYSTAL  
SITE DESIGN ELEMENTS

Rev 0  
08/03/2017



Kimley»Horn

SRI miller dunwiddie  
Engineering Group Inc. ENVIRONMENTAL





## Roadway Lighting at Roundabout

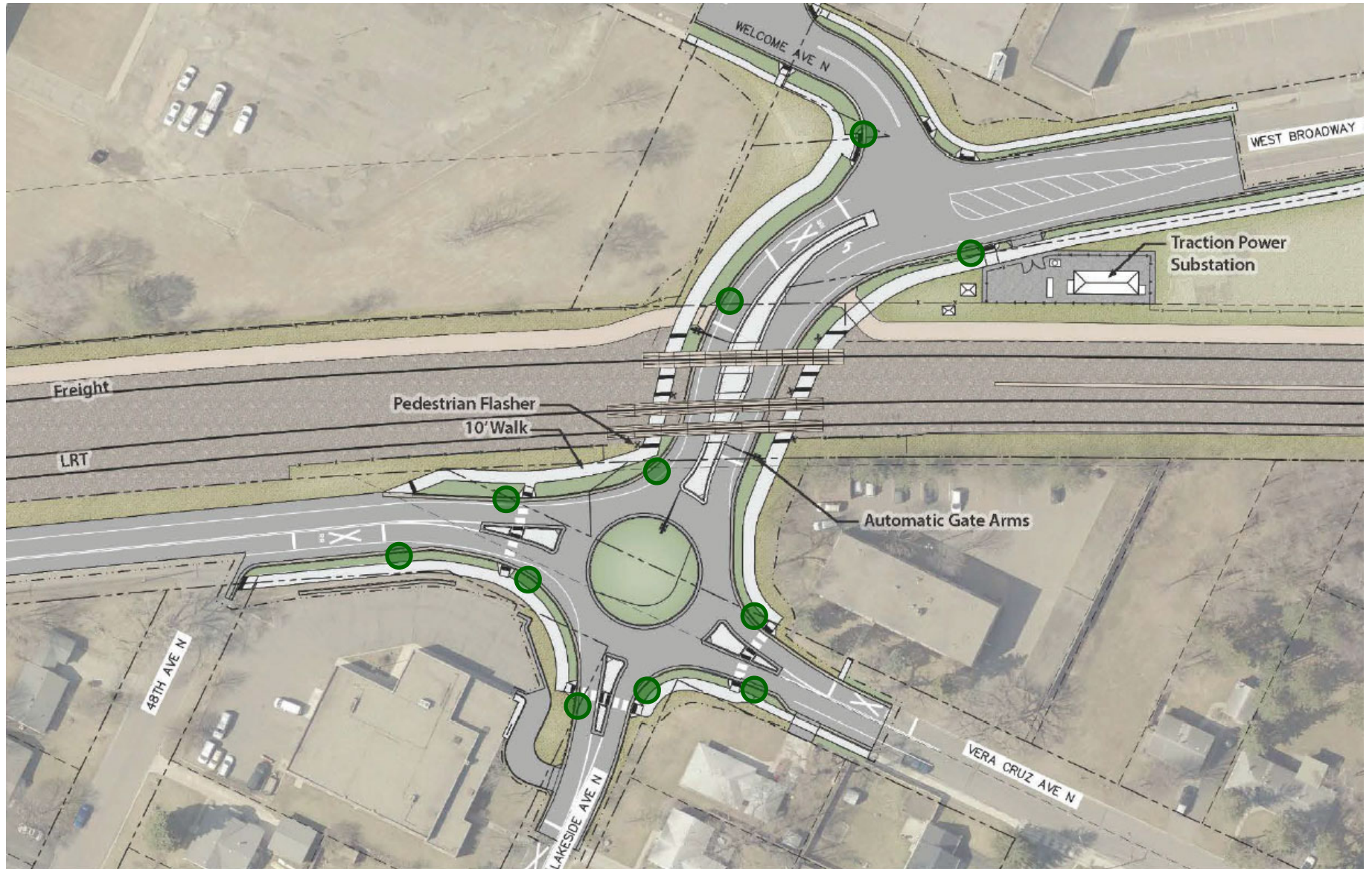
- **Project will install 11 lights**
  - **8 on east side of crossing including the roundabout**
  - **3 on the west side of crossing including Welcome intersection**
- **Will match 20' tall poles & luminaires on Lakeland Avenue (CR81 frontage road) but will use LED not High Pressure Sodium**
- **Lights will become property of the city after project completion**





# Roadway Lighting at Roundabout

- Approximate Proposed Locations (11)







## Bass Lake Road Station – Canopy Color Options

- Options presented by Metro Transit:
  - **Forest Green (matches city's street lights & traffic signals)**  
*City staff preference*
  - **Orange (high contrast – adds distinctiveness)**  
*Metro Transit preference*
  - **Seafoam Green (distinctive, but less so than orange)**
  - **Terra Cotta (a “go-to” color when in doubt)**
- Options suggested by city staff but not acceptable to Metro Transit:
  - **Blue (city flag color) not allowed because it's one of Metro Transit's brand colors**
  - **Yellow (accents on new PW bldg) not allowed because it's Metro Transit's other brand color**
  - **Black (“goes with any outfit”) – too bland**
  - **Gray (to match Metro Transit's light fixtures etc. in Park & Ride) or Silver/Metallic (to reinforce the airplane wing theme) – too bland**



# Bass Lake Road Station – Canopy Color Options

*Looking South from Bass Lake Road*







# Bass Lake Road Station – Canopy Color Options

*Looking West from Park & Ride*

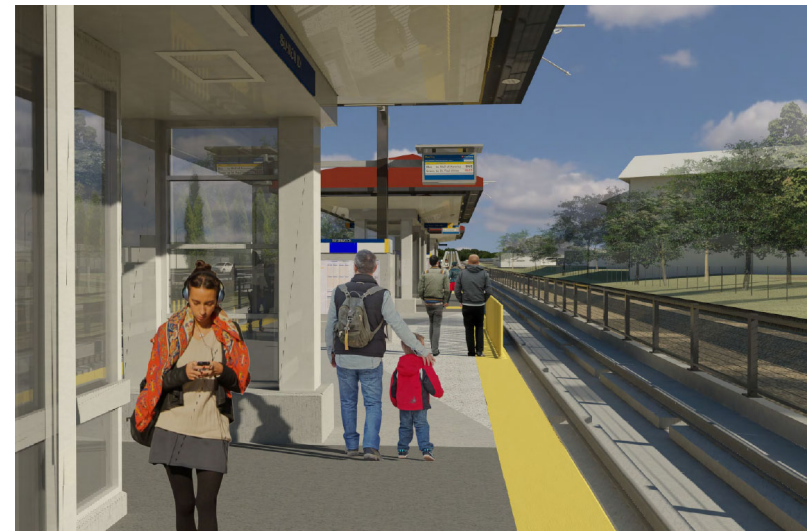
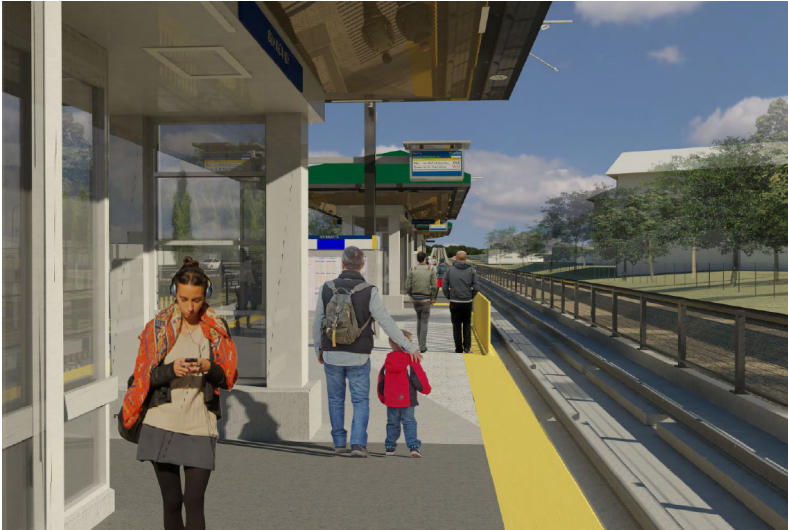






# Bass Lake Road Station – Canopy Color Options

*Looking South from Station Platform*





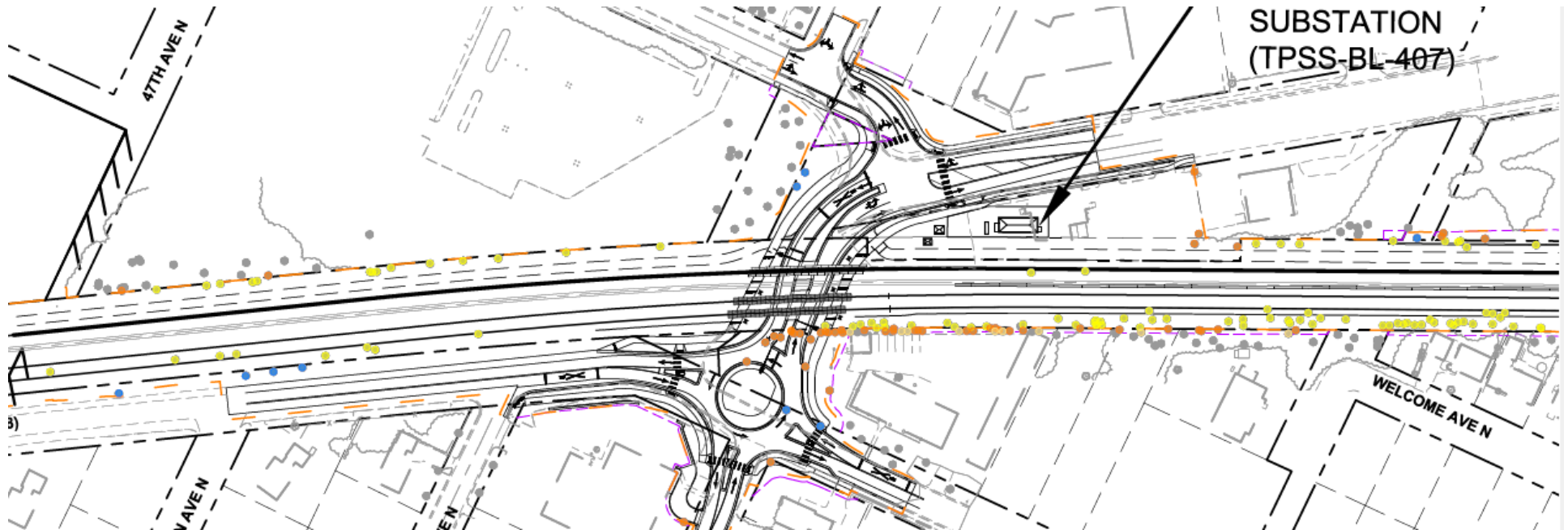


## Tree Removals

- Project includes replacement planting or compensation for trees being removed from:
  - Street ROW (35) – replacement planting by the project
  - City Property (18) – replacement planting by the project
  - Private Property (133) – will not be replaced by the project but owner will be financially compensated through the easement/right-of-way acquisition process
    - *Exception: 39 trees on Elmhurst-Hampshire properties being removed to install visual screening fence – no compensation because owners can decline the fence*
- Project does not include replacement planting of trees located in BNSF ROW (513)



# Tree Removals



SYMBOL	CONDITION	EST. TOTAL
<span style="color: blue;">●</span>	ROADWAY ROW REMOVALS	35
<span style="color: cyan;">●</span>	ROADWAY ROW VULNERABLE	0

SYMBOL	CONDITION	EST. TOTAL
<span style="color: green;">●</span>	PARKLAND/OPEN SPACE REMOVALS	0
<span style="color: lightgreen;">●</span>	PARKLAND/OPEN SPACE VULNERABLE	0

SYMBOL	CONDITION	EST. TOTAL
<span style="color: red;">●</span>	AGENCY/COUNTY/CITY LAND REMOVALS	8
<span style="color: pink;">●</span>	AGENCY/COUNTY/CITY LAND VULNERABLE	10

EST. TOTAL REMOVALS	43
EST. TOTAL VULNERABLE	10

SYMBOL	CONDITION	EST. TOTAL
<span style="color: yellow;">●</span>	RAIL ROW REMOVALS	513
<span style="color: gold;">●</span>	RAIL ROW VULNERABLE	0

SYMBOL	CONDITION	EST. TOTAL
<span style="color: orange;">●</span>	PRIVATE PROPERTY REMOVALS	114
<span style="color: peachpuff;">●</span>	PRIVATE PROPERTY VULNERABLE	19

EST. TOTAL REMOVALS	627
EST. TOTAL VULNERABLE	19

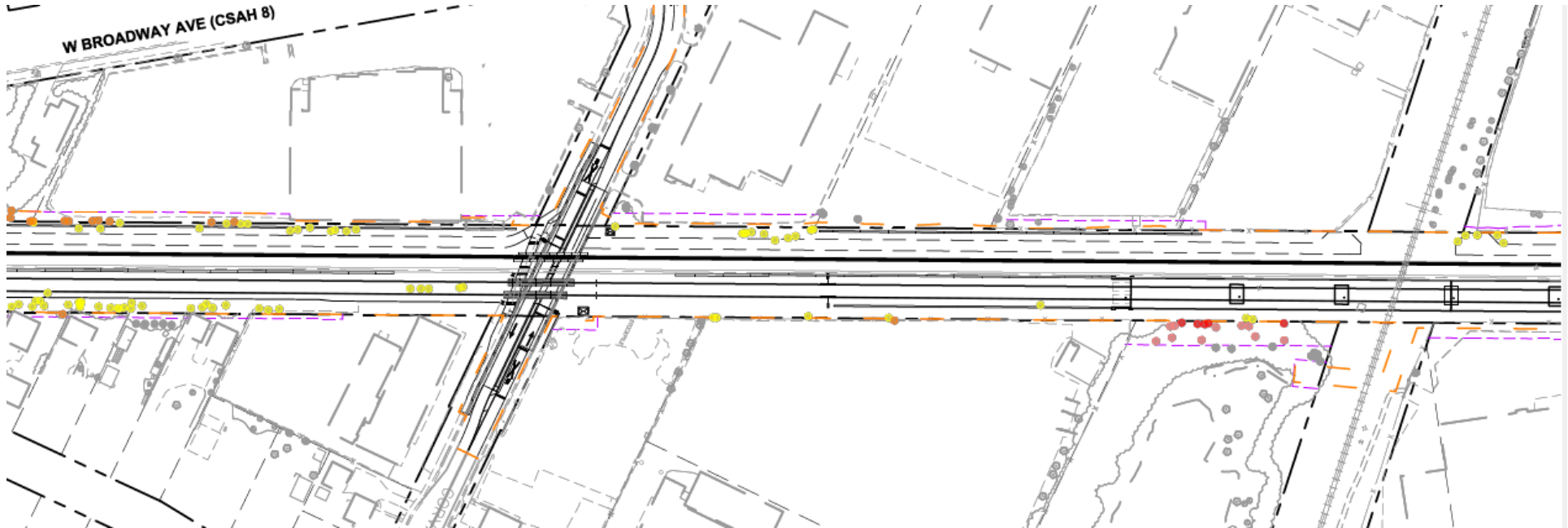
**NOTES:**

1. QUANTITIES INDICATED ARE BASED ON INITIAL REVIEW OF IMPACTS TO EXISTING TREES. QUANTITIES WILL CHANGE AS DESIGN ADVANCEMENTS OCCUR.
2. SURVEY INCLUDES ALL DECIDUOUS TREES 6" CALIPER AND GREATER





# Tree Removals



SYMBOL	CONDITION	EST. TOTAL
Blue circle	ROADWAY ROW REMOVALS	35
Cyan circle	ROADWAY ROW VULNERABLE	0

SYMBOL	CONDITION	EST. TOTAL
Green circle	PARKLAND/OPEN SPACE REMOVALS	0
Light green circle	PARKLAND/OPEN SPACE VULNERABLE	0

SYMBOL	CONDITION	EST. TOTAL
Red circle	AGENCY/COUNTY/CITY LAND REMOVALS	8
Pink circle	AGENCY/COUNTY/CITY LAND VULNERABLE	10

EST. TOTAL REMOVALS	43
EST. TOTAL VULNERABLE	10

SYMBOL	CONDITION	EST. TOTAL
Yellow circle	RAIL ROW REMOVALS	513
Tan circle	RAIL ROW VULNERABLE	0

SYMBOL	CONDITION	EST. TOTAL
Orange circle	PRIVATE PROPERTY REMOVALS	114
Light orange circle	PRIVATE PROPERTY VULNERABLE	19

EST. TOTAL REMOVALS	627
EST. TOTAL VULNERABLE	19

**NOTES:**

1. QUANTITIES INDICATED ARE BASED ON INITIAL REVIEW OF IMPACTS TO EXISTING TREES. QUANTITIES WILL CHANGE AS DESIGN ADVANCEMENTS OCCUR.
2. SURVEY INCLUDES ALL DECIDUOUS TREES 6" CALIPER AND GREATER



# Tree Removals



SYMBOL	CONDITION	EST. TOTAL
Blue circle	ROADWAY ROW REMOVALS	35
Cyan circle	ROADWAY ROW VULNERABLE	0

SYMBOL	CONDITION	EST. TOTAL
Green circle	PARKLAND/OPEN SPACE REMOVALS	0
Light green circle	PARKLAND/OPEN SPACE VULNERABLE	0

SYMBOL	CONDITION	EST. TOTAL
Red circle	AGENCY/COUNTY/CITY LAND REMOVALS	8
Pink circle	AGENCY/COUNTY/CITY LAND VULNERABLE	10

EST. TOTAL REMOVALS	43
EST. TOTAL VULNERABLE	10

SYMBOL	CONDITION	EST. TOTAL
Yellow circle	RAIL ROW REMOVALS	513
Tan circle	RAIL ROW VULNERABLE	0

SYMBOL	CONDITION	EST. TOTAL
Orange circle	PRIVATE PROPERTY REMOVALS	114
Light orange circle	PRIVATE PROPERTY VULNERABLE	19

EST. TOTAL REMOVALS	627
EST. TOTAL VULNERABLE	19

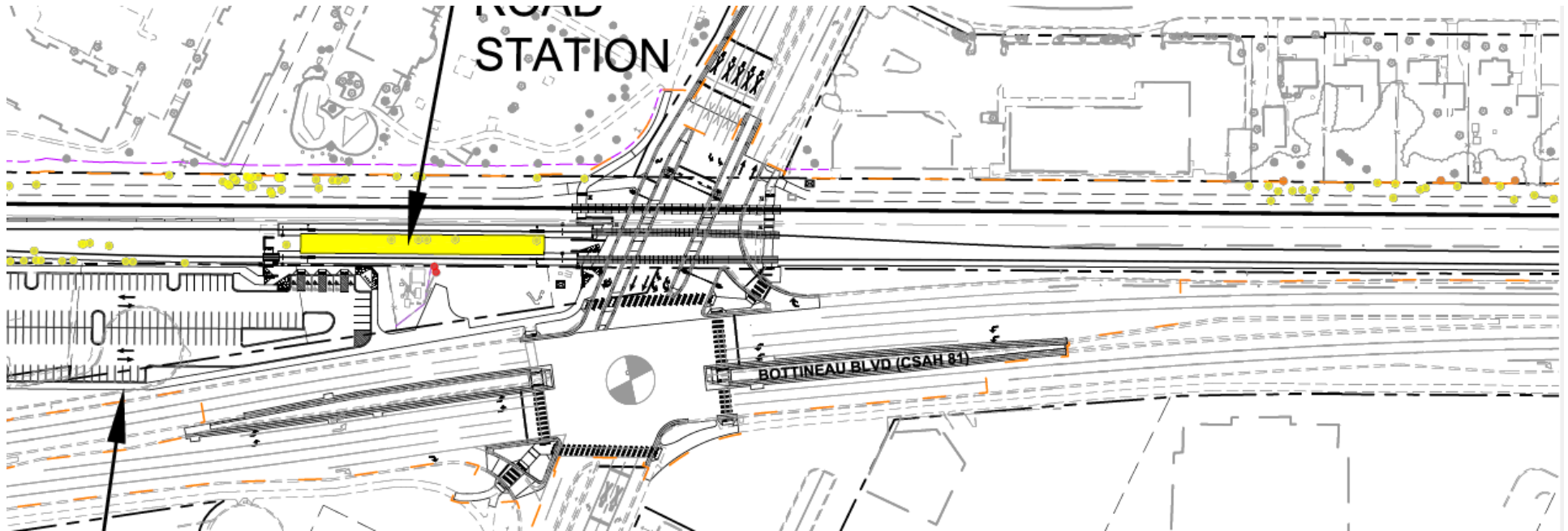
**NOTES:**

1. QUANTITIES INDICATED ARE BASED ON INITIAL REVIEW OF IMPACTS TO EXISTING TREES. QUANTITIES WILL CHANGE AS DESIGN ADVANCEMENTS OCCUR.
2. SURVEY INCLUDES ALL DECIDUOUS TREES 6" CALIPER AND GREATER





# Tree Removals



SYMBOL	CONDITION	EST. TOTAL
Blue circle	ROADWAY ROW REMOVALS	35
Cyan circle	ROADWAY ROW VULNERABLE	0

SYMBOL	CONDITION	EST. TOTAL
Green circle	PARKLAND/OPEN SPACE REMOVALS	0
Light green circle	PARKLAND/OPEN SPACE VULNERABLE	0

SYMBOL	CONDITION	EST. TOTAL
Red circle	AGENCY/COUNTY/CITY LAND REMOVALS	8
Pink circle	AGENCY/COUNTY/CITY LAND VULNERABLE	10

EST. TOTAL REMOVALS	43
EST. TOTAL VULNERABLE	10

SYMBOL	CONDITION	EST. TOTAL
Yellow circle	RAIL ROW REMOVALS	513
Light yellow circle	RAIL ROW VULNERABLE	0

SYMBOL	CONDITION	EST. TOTAL
Orange circle	PRIVATE PROPERTY REMOVALS	114
Light orange circle	PRIVATE PROPERTY VULNERABLE	19

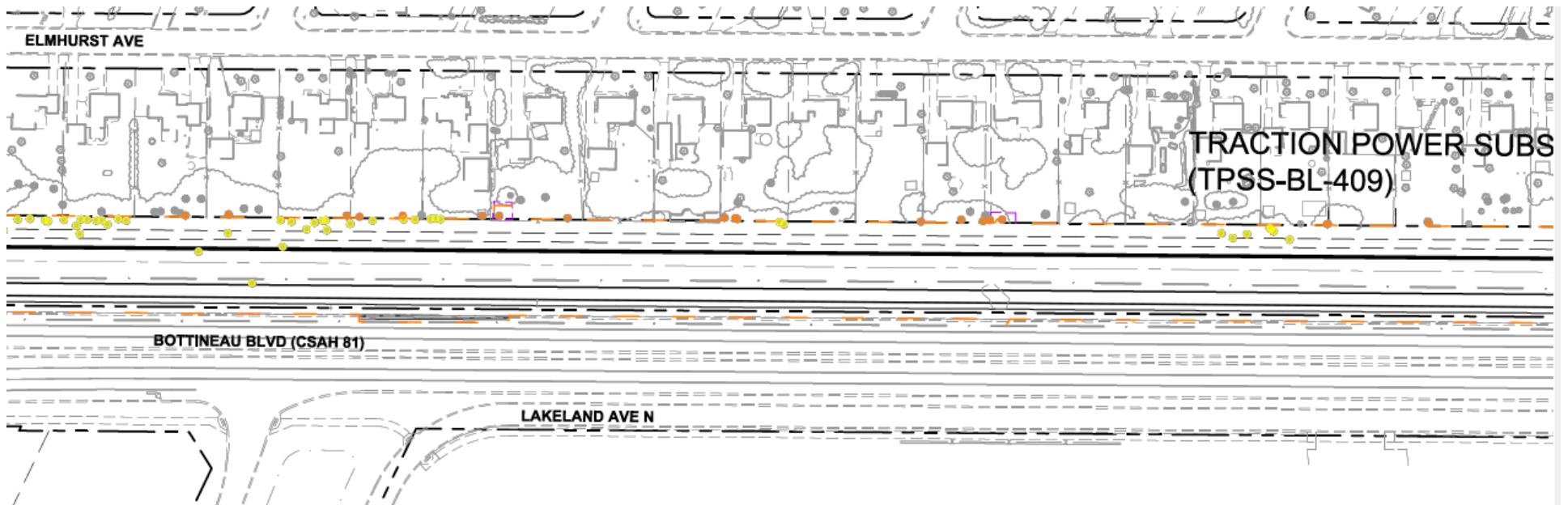
EST. TOTAL REMOVALS	627
EST. TOTAL VULNERABLE	19

**NOTES:**

1. QUANTITIES INDICATED ARE BASED ON INITIAL REVIEW OF IMPACTS TO EXISTING TREES. QUANTITIES WILL CHANGE AS DESIGN ADVANCEMENTS OCCUR.
2. SURVEY INCLUDES ALL DECIDUOUS TREES 6" CALIPER AND GREATER



# Tree Removals



SYMBOL	CONDITION	EST. TOTAL
	ROADWAY ROW REMOVALS	35
	ROADWAY ROW VULNERABLE	0

SYMBOL	CONDITION	EST. TOTAL
	PARKLAND/OPEN SPACE REMOVALS	0
	PARKLAND/OPEN SPACE VULNERABLE	0

SYMBOL	CONDITION	EST. TOTAL
	AGENCY/COUNTY/CITY LAND REMOVALS	8
	AGENCY/COUNTY/CITY LAND VULNERABLE	10

EST. TOTAL REMOVALS	43
EST. TOTAL VULNERABLE	10

SYMBOL	CONDITION	EST. TOTAL
	RAIL ROW REMOVALS	513
	RAIL ROW VULNERABLE	0

SYMBOL	CONDITION	EST. TOTAL
	PRIVATE PROPERTY REMOVALS	114
	PRIVATE PROPERTY VULNERABLE	19

EST. TOTAL REMOVALS	627
EST. TOTAL VULNERABLE	19

**NOTES:**

1. QUANTITIES INDICATED ARE BASED ON INITIAL REVIEW OF IMPACTS TO EXISTING TREES. QUANTITIES WILL CHANGE AS DESIGN ADVANCEMENTS OCCUR.
2. SURVEY INCLUDES ALL DECIDUOUS TREES 6" CALIPER AND GREATER





# Tree Removals



SYMBOL	CONDITION	EST. TOTAL
	ROADWAY ROW REMOVALS	35
	ROADWAY ROW VULNERABLE	0

SYMBOL	CONDITION	EST. TOTAL
	PARKLAND/OPEN SPACE REMOVALS	0
	PARKLAND/OPEN SPACE VULNERABLE	0

SYMBOL	CONDITION	EST. TOTAL
	AGENCY/COUNTY/CITY LAND REMOVALS	8
	AGENCY/COUNTY/CITY LAND VULNERABLE	10

EST. TOTAL REMOVALS	43
---------------------	----

EST. TOTAL VULNERABLE	10
-----------------------	----

SYMBOL	CONDITION	EST. TOTAL
	RAIL ROW REMOVALS	513
	RAIL ROW VULNERABLE	0

SYMBOL	CONDITION	EST. TOTAL
	PRIVATE PROPERTY REMOVALS	114
	PRIVATE PROPERTY VULNERABLE	19

EST. TOTAL REMOVALS	627
---------------------	-----

EST. TOTAL VULNERABLE	19
-----------------------	----

**NOTES:**

1. QUANTITIES INDICATED ARE BASED ON INITIAL REVIEW OF IMPACTS TO EXISTING TREES. QUANTITIES WILL CHANGE AS DESIGN ADVANCEMENTS OCCUR.
2. SURVEY INCLUDES ALL DECIDUOUS TREES 6" CALIPER AND GREATER